



# East Elementary EXECUTIVE SUMMARY

PROVIDED BY FINDORFF

120 S. Sanborn Ave • Jefferson, WI PAGE 1

## Phase 4 Continues...

Even with the holiday season upon us, crews have been moving along quickly with the Phase 4 renovations! Painting in the classrooms has been completed along with the completion of ceiling grid and border tile in the same spaces. Crews are also working on re-installing existing shelving in the classrooms, with finish casework on the way for install in the coming days. Overhead MEPF devices and fixtures will be going in this week, with the installation of full ceiling tile systems to follow.

Phase 4 work will round out with installation of the new flooring in the spaces and final cleaning prior to turnover. Looking forward to getting another phase of work complete!

## Recently

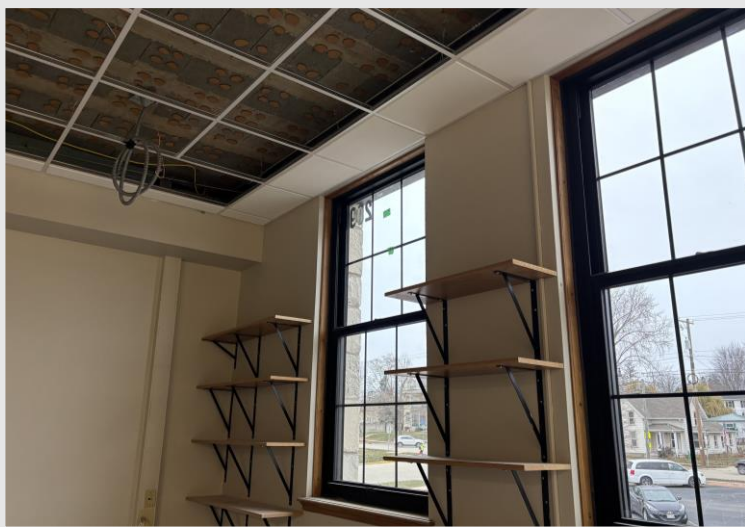
- Phase 4 Painting Complete
- Phase 4 Shelving Installation
- Phase 4 Ceiling Grid & Border Installation
- Overhead MEPF Fixture & Device Installation

## Looking Ahead

- Phase 4 Full Ceiling Tile Installation
- Phase 4 Casework Installation
- Phase 4 Flooring Installation



*Installation of new visual displays has been completed in the Phase 4 Classrooms!*



*Installation of shelving is in-process following the completion of the ceiling grid and border tile.*



*A look at one of the new unit ventilators installed with countertops on either side for a sleek finish!*

## Questions?

Project Manager, Jonathan Winch / (608) 219-5091 / [jwinch@findorff.com](mailto:jwinch@findorff.com)

Project Engineer, Brennan Sullivan / (920) 319-2077 / [bsullivan@findorff.com](mailto:bsullivan@findorff.com)

**Findorff**  
BUILDING & BEYOND